

# Fifty Classic Symbols of the Treasure State: Uncovering the Rich History and Culture of Montana

Nestled in the heart of the American West, Montana, known as the "Treasure State," is a land of captivating landscapes and rich cultural heritage. Its vast expanse encompasses soaring mountains, pristine rivers, abundant wildlife, and vibrant communities. These elements have shaped the state's identity, inspiring a collection of classic symbols that reflect its unique character. In this article, we delve into the stories behind fifty iconic symbols of the Treasure State, exploring their historical significance, cultural importance, and enduring appeal.



## Montana Icons: Fifty Classic Symbols of the Treasure State

★★★★★ 5 out of 5

Language : English

File size : 10230 KB

Text-to-Speech : Enabled

Screen Reader : Supported

Word Wise : Enabled

Print length : 112 pages

Lending : Enabled

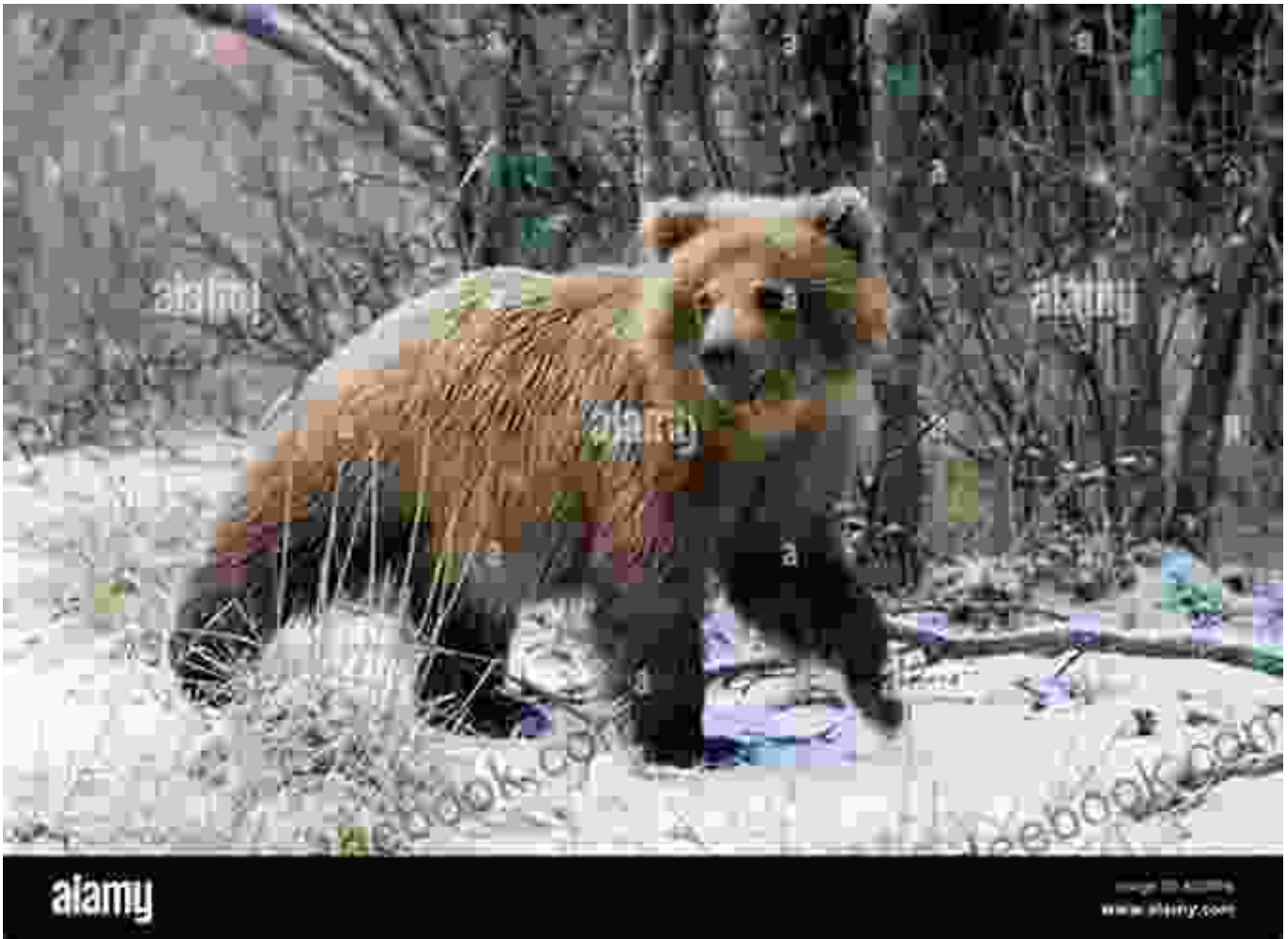


## 1. The Montana Sapphire



The Montana sapphire, designated as the official state gemstone in 1969, is a symbol of Montana's natural beauty and mineral wealth. Found in the rugged Missouri River Breaks, these precious stones showcase a breathtaking spectrum of blue hues, from vibrant cornflower to deep navy. Montana sapphires have adorned jewelry for centuries, capturing the hearts of collectors and enthusiasts worldwide.

## 2. The Grizzly Bear



The grizzly bear, Montana's state animal, embodies the state's untamed spirit.

The grizzly bear, Montana's official state animal, represents the untamed spirit of the Treasure State. These powerful predators once roamed freely throughout the state, their presence a testament to Montana's vast wilderness. Today, grizzly bears are protected and can be observed in various national parks and wildlife refuges, including Glacier National Park and the Bob Marshall Wilderness Complex.

## 3. The Bitterroot Flower



The bitterroot flower, designated as Montana's official state flower in 1895, holds deep cultural significance for the state's Native American tribes. Its delicate white petals, accented with intricate purple veins, bloom abundantly in the spring, carpeting the mountainsides in a vibrant display. The bitterroot flower represents the resilience of Montana's people, who have endured hardships and thrived in the challenging frontier environment.

#### **4. The Big Sky**



The "Big Sky," Montana's nickname, reflects the state's boundless horizons.

Montana's nickname, the "Big Sky," aptly captures the state's expansive and awe-inspiring skies. The vastness of the Montana sky offers endless opportunities for stargazing, cloud watching, and experiencing the breathtaking spectacle of the Northern Lights. The Big Sky has become an iconic symbol of Montana's boundless horizons and the sense of freedom and possibility that pervades the state.

## 5. The Yellowstone River



The Yellowstone River, Montana's longest river, is a vital lifeline for the state's ecosystems and communities. Its headwaters originate in the high peaks of the Absaroka Mountains, and it flows over 700 miles through the heart of Montana, eventually joining the Missouri River. The Yellowstone River supports abundant wildlife, including fish, birds, and mammals, and its fertile valleys have been home to agricultural communities for centuries.

## **6. The Missouri River Breaks**



The Missouri River Breaks, Montana's "badlands," offer a glimpse into the state's geological history.

The Missouri River Breaks, a vast and rugged landscape in central Montana, are often referred to as the state's "badlands." This unique geological formation showcases ancient riverbeds, towering cliffs, and colorful rock formations. The Missouri River Breaks have long been home to Native American tribes and have played a significant role in the state's history and culture.

## **7. The Crazy Mountains**



The Crazy Mountains, located in southern Montana, are a distinct mountain range with jagged peaks and colorful rock formations. Their unique appearance, resembling a jumbled pile of rocks, has earned them the name "Crazy Mountains." These mountains offer stunning views and are a popular destination for hiking, camping, and wildlife viewing.

## **8. The Museum of the Rockies**





The Museum of the Rockies, Montana's premier cultural destination, showcases the state's history and natural heritage.

The Museum of the Rockies, located in Bozeman, is Montana's premier cultural destination. The museum houses a vast collection of exhibits that explore the state's history, natural heritage, and wildlife. Highlights include dinosaur fossils, Native American artifacts, and interactive science and technology displays. The Museum of the Rockies is a must-visit for anyone interested in Montana's rich past and present.

## **9. The Montana Folk Festival**



The Montana Folk Festival, held annually in Butte, is a vibrant celebration of Montana's cultural heritage. The festival showcases traditional music, dance, and crafts from across the state, bringing together musicians, dancers, and artisans from diverse backgrounds. The Montana Folk Festival provides a platform for preserving and promoting Montana's unique cultural traditions.

## **10. The Montana Symphony**



The Montana Symphony, Montana's premier orchestra, brings world-class performances to communities across the state.

The Montana Symphony, based in Billings, is Montana's premier professional orchestra. The symphony performs a wide range of classical and contemporary music, including works by Montana composers. The

Montana Symphony tours extensively throughout the state, bringing world-class live music performances to communities both large and small.

## 11. The Montana Historical Society



The Montana Historical Society, Montana's oldest cultural institution, is dedicated to preserving and interpreting the state's rich history. The society operates several museums and historic sites across the state, including the Montana Historical Museum in Helena. The Montana Historical Society's collections include artifacts, documents, and photographs that shed light on Montana's past.

## 12. The Montana State Capitol



The Montana State Capitol, designed by architect George R. Mann, is a symbol of Montana's statehood and a testament to its architectural heritage.

The Montana State Capitol, located in Helena, is an architectural gem and a symbol of Montana's statehood. The Capitol was designed by architect George R. Mann and completed in 1902. The building features a grand copper dome, intricate stonework, and elegant interior decorations. The Montana State Capitol is a popular tourist destination and a



## Montana Icons: Fifty Classic Symbols of the Treasure State

★★★★★ 5 out of 5

Language : English

File size : 10230 KB

Text-to-Speech : Enabled  
Screen Reader : Supported  
Word Wise : Enabled  
Print length : 112 pages  
Lending : Enabled



## Unlocking the Power of Celebrity Branding: A Comprehensive Guide by Nick Nanton

In the ever-evolving marketing landscape, celebrity branding has emerged as a potent force, captivating audiences and driving brand success. From...



## The Legendary Riggins Brothers: Play-by-Play of a Football Dynasty

The Unforgettable Trio: The Impact of the Riggins Brothers on Football  
The Riggins brothers, Lorenzo "Zo" and Thomas "Tom," are revered as icons in the annals...